



S T N E T N O O

FENTON

LASER EDGED



4 - 8

BALTIMORE

MULTIPANELED



9-10

HARRINGTON

MULTIPANELED



1 1

KENSINGTON

MULTIPANELED



1 2

OSLO

MULTIPANELED



1 3

CLEVELAND

REEDED PANEL



1 4-1 6

BELMONT

SHAKER



1 7-2 2

BOSTON

SHAKER



2 3

GRESHAM

SHAKER



2 4

BURLINGTON

SHAKER



2 5

BERKELEY

SHAKER



2 6

MILAN

SHAKER



2 7

SALISBURY

SHAKER



28

ARIES

HANDLELESS



29

ORION

HANDLELESS



30-35

GEMINI

HANDLELESS



36

HAPTON

SLAB DOOR



37

LUMI

SLAB DOOR



38

COUNTRYVALE

TRADITIONAL



39

OXFORD

TRADITIONAL



40

DOOR KEY



18MM
DOORS



18MM
PANELS



22MM
DOORS



HANDLELESS



LASER EDGED



ANGLED DOORS AVAILABLE



KITCHEN AVAILABLE



SUPPLIED AS PAINTED



ACRYLIC FINISH



GLOSS DOORS AVAILABLE



VINYL FINISH

ODYSSEY

LASER EDGED



41-43

MTM DOOR OPTIONS 44

FEATURE DOORS 47

MTM ODYSSEY OPTIONS 48

MTM FENTON OPTIONS 49

MTM COLOUR OPTIONS 50

HANDLE OPTIONS 52

EMUCA FITTINGS 66

THE COLOURS REPRODUCED WITHIN THIS BROCHURE ARE AS CLOSE AS THE REPRODUCTION PROCESS ALLOW.
DUE TO OUR POLICY OF CONTINUOUS PRODUCT DEVELOPMENT, WE RESERVE THE RIGHT TO ALTER ANY SPECIFICATIONS WITHOUT PRIOR NOTICE.
PRODUCTS CAN BE INTRODUCED AND DISCONTINUED AT ANY TIME, IT IS RECOMMENDED TO CHECK AVAILABILITY BEFORE ORDERING.

COVER IMAGE: FENTON
WHITE & KALA ASH EMBOSSED.

FENTON



FENTON USES A UNIQUE PAINT APPLICATION WHICH GIVES IT AN UNRIVALLED RESISTANCE TO FINGER PRINTS AND HAS AN EXCEPTIONALLY HARDWEARING SURFACE PERFECT FOR THE MODERN BEDROOM. IT WOULD FIT SEAMLESSLY IN TO ANY BEDROOM, BATHROOM, KITCHEN OR HOME LIVING APPLICATION AND IS AVAILABLE IN THE FIVE MOST ON TREND SOLID COLOURS WITH A WOODGRAIN OPTION IN KALA ASH FOR THOSE WISHING TO HAVE AN EVEN MORE CONTEMPORARY FEEL.

CARBON GREY



CARBON GREY



CASHMERE



DOVE GREY



REED GREEN



KALA ASH



WHITE









BALTIMORE



NAVY BLUE

MULTIPANELED BEDROOM DOORS ARE RIGHT ON TREND AND WITH FOUR OPTIONS TO CHOOSE FROM, THERE IS A STYLE TO SUIT ALL TASTES. BALTIMORE - A FOUR PANEL SHAKER, HARRINGTON - A SHAKER WITH A CLASSIC CHAMFER DETAIL, KENSINGTON - A RAISED FOUR PANEL DOOR AND OSLO - A MODERN TAKE ON THE MULTIPANELED DOOR.



HARRINGTON



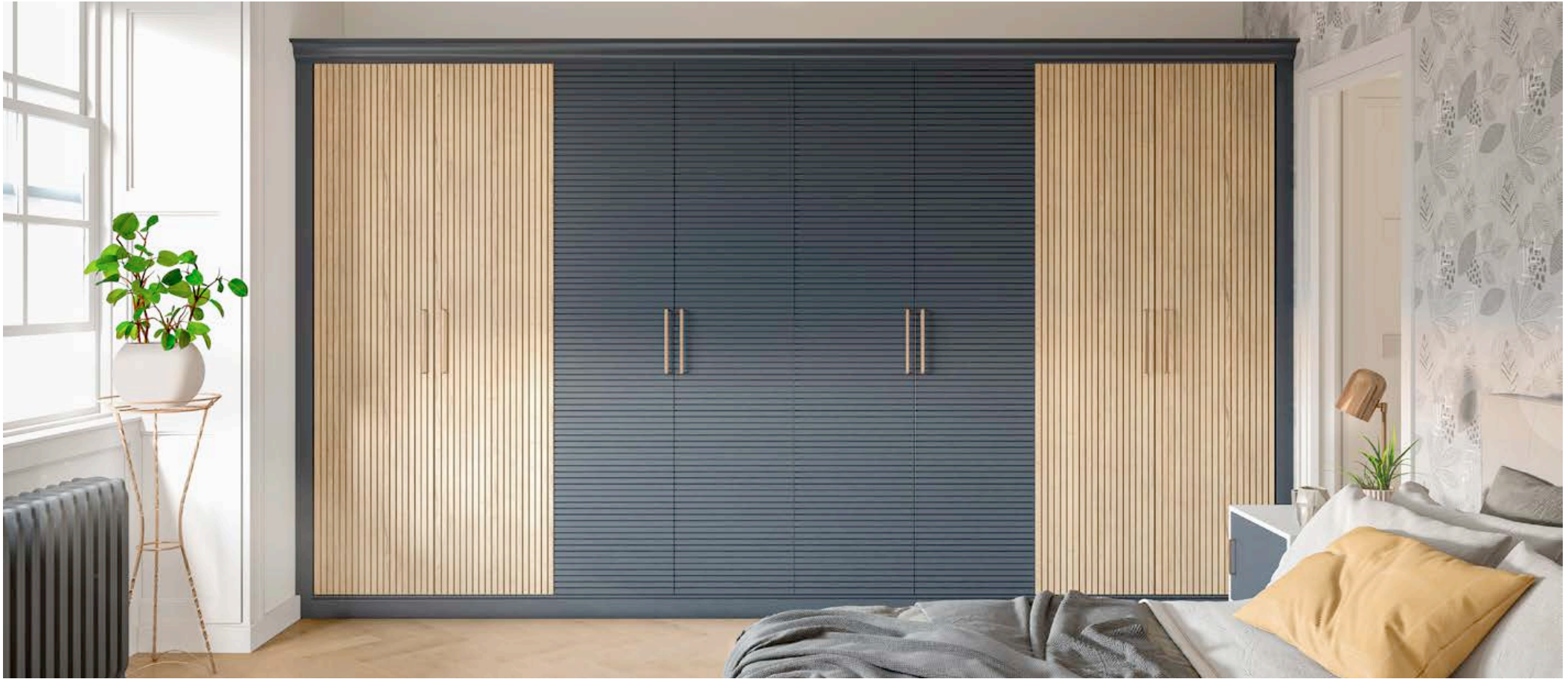
KENSINGTON



OSLO



CLEVELAND



NAVY BLUE & HALIFAX OAK

GROOVED DOORS CREATE A PANELLED EFFECT FOR THOSE SEEKING SOMETHING UNIQUE. AVAILABLE WITH HORIZONTAL OR VERTICAL GROOVES YOU CAN CREATE YOUR OWN UNIQUE FINISH.





BELMONT



DUSTY PINK & INDIGO

SHAKER DOORS ARE AMONG OUR MOST POPULAR BEDROOM DOORS. WE HAVE SEVERAL STYLES TO CHOOSE FROM INCLUDING MODERN SHAKER DOORS WITH NARROW STYLES AND CLASSIC OPTIONS WITH WIDE STYLES. WE ALSO HAVE OPTIONS WITH OR WITHOUT 'V' GROOVES AND WITH OR WITHOUT MID RAILS.











BOSTON



GRESHAM



BURLINGTON



BERKELEY



MILAN



SALISBURY



ARIES



DAKAR MATT

HANDLELESS DOORS ARE AN OPTION FOR THOSE WANTING AN UNCLUTTERED/ SEAMLESS LOOK. BUILT IN HANDLES IN THE ARIES, ORION & GEMINI DOORS CREATE A FREE FLOWING THEME FOR A TRULY MODERN FINISH.

ORION













GEMINI



HAPTON



SONOMA OAK

FOR THOSE WANTING THE SEAMLESS LOOK WITH A HANDLE WE HAVE THE HAPTON DESIGN AND THE LUMI SLAB DESIGN. MODERN CONTINENTAL STYLING TYPIFIED WITH A WOODGRAIN OR GLOSS FINISH. THE SUBTLE MOULDED EDGE DETAIL OF HAPTON GIVES A SOFT FLUID FEEL TO FASCIAS WHICH OTHERWISE ARE CLEAN AND SIMPLE. A STYLISH DOOR AND DRAWER PULL HANDLES COMPLETES THE EFFECT.

LUMI



COUNTRYVALE



GRAPHITE

THE APPEAL OF THE RAISED PANEL DOOR NEVER DATES AS IT CREATES A CLASSIC FINISH. WE HAVE THE COUNTRYVALE OPTION WITH A NARROW RAISED PANEL OR THE MORE CLASSIC OXFORD DESIGN CONTAINING A MORE WIDE RAISED PANEL DESIGN. WITH ITS GEORGIAN FEEL THE OXFORD DOORS DISPLAY ELEGANCE IN ABUNDANCE. PERIOD HANDLES COMPLETE THE LOOK.

OXFORD



ODYSSEY



WHITE

FOR THOSE ASPIRING TO A TRULY MODERN FINISH, WE HAVE THE ODYSSEY LASER EDGED RANGE. THE SQUARE LASER EDGE FINISH IS AVAILABLE IN SEVERAL GLOSS AND SUPER MATT FINISHES OFFERING A WEALTH OF CHOICE. THE ODYSSEY DOOR IS MADE WITH HIGH GLOSS ACRYLIC WHICH GIVES A SUPERIOR LEVEL OF REFLECTION WITH NO COMPROMISE, ON STYLE FOR ULTRA MODERN LIVING. MINIMALIST HANDLES COMPLETE THIS STATEMENT LOOK





MTM DOOR OPTIONS



ARIES

ASCOT

AUCKLAND

AVONDALE

BALTIMORE

BELMONT

BERKELEY

BOSTON

BOWLAND

BURY

CASHEL

G

G

A

A

A

A

A

A

AG

AG

MTM DOOR OPTIONS KEY!

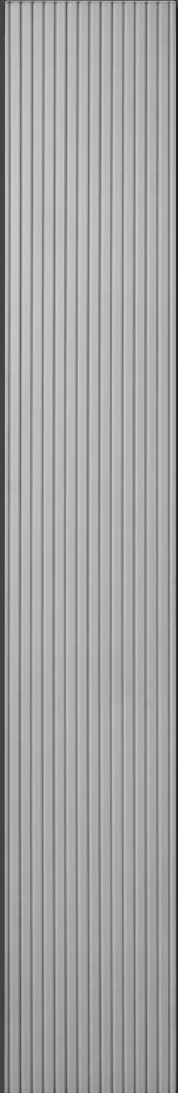


ANGLED DOORS AVAILABLE



GLOSS DOORS AVAILABLE

VERTICAL &
HORIZONTAL
AVAILABLE



CLEVELAND

G



COUNTRYVALE

AG



DOVER

AG



EUROLINE

AG



GISBURN

AG



GRESHAM

A



HAPTON

AG



HARRINGTON

HEBDEN

AG



HEYWOOD

A

MTM DOOR OPTIONS

MTM DOOR OPTIONS KEY:

A ANGLED DOORS AVAILABLE **G** GLOSS DOORS AVAILABLE



KENSINGTON



KENT



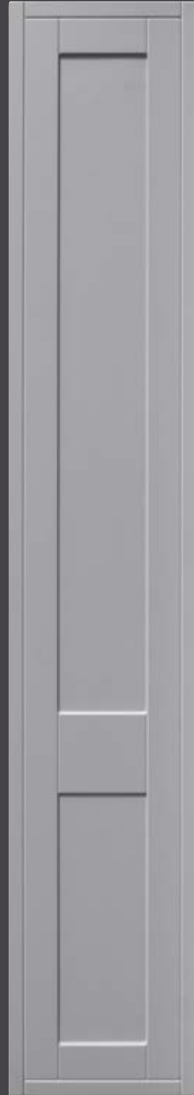
LUMI

A G



LUNAR

A



MAYFAIR



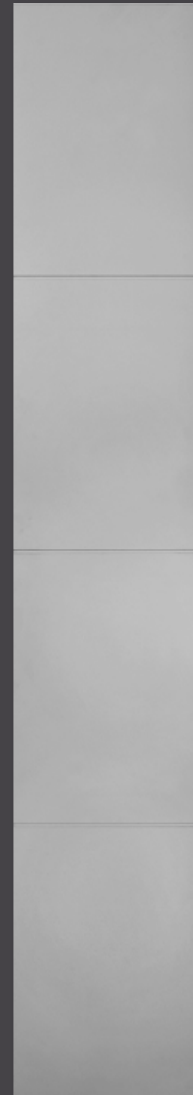
MILAN

A



ORION

A G



OSLO

A G



OXFORD

A



RICHMOND

G

FEATURE DOORS

GLAZING OPTIONS



SALISBURY

A



SHERWOOD

G



WESTPORT

AG



GEORGIAN



PORThOLE



ACCENT



FIVE HOLE



FULL
FRAME



FRAME



RECTANGLE

MTM ODYSSEY DOOR OPTIONS

HIGH GLOSS



ODYSSEY
CREAM GLOSS

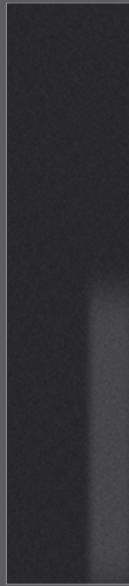


DOVE GREY
GLOSS



WHITE
GLOSS

METALLIC



ANTHRACITE
(METALLIC)



BLUE
(METALLIC)



CHAMPAGNE
(METALLIC)

SUPER MATT



DUST GREY
SUPERMATT



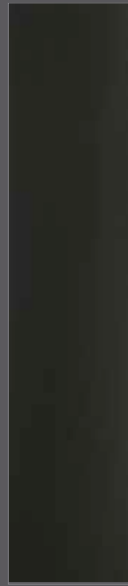
CASHMERE
SUPERMATT



DOVE GREY
SUPERMATT



FJORD
SUPERMATT



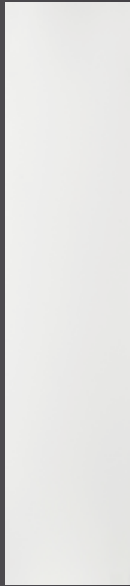
GRAPHITE
SUPERMATT



INDIGO
SUPERMATT



KOMBU
SUPERMATT



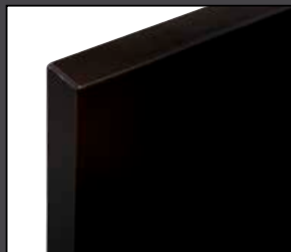
WHITE
SUPERMATT

ODYSSEY HIGH GLOSS COLOURS CAN BE INDIVIDUALLY MANUFACTURED TO YOUR SPECIFIC REQUIREMENTS WITH EITHER A MATCHING EDGE OR TWO TONE EDGE.

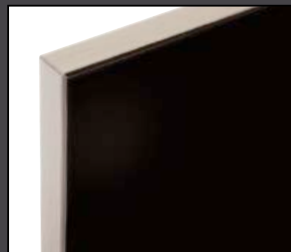
ALL DOORS HAVE MATCHING REVERSE EXCEPT METALLIC GLOSS COLOURS WHICH HAVE SILVER REVERSE.

ANGLED DOORS ARE NOT AVAILABLE IN ODYSSEY.

ALL SUPER MATT DOORS ARE SUPPLIED WITH MATCHING EDGES AND CANNOT BE SUPPLIED WITH TWO TONE EDGES.



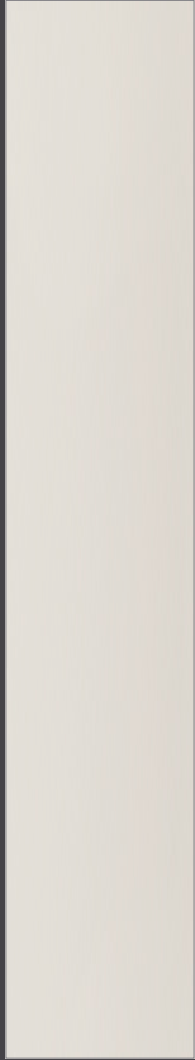
MATCHING EDGE



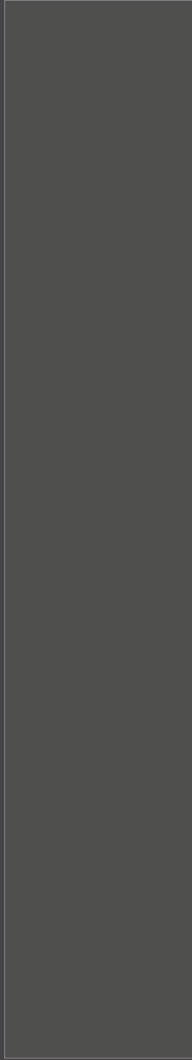
TWO TONE EDGE

MTM FENTON DOOR OPTIONS

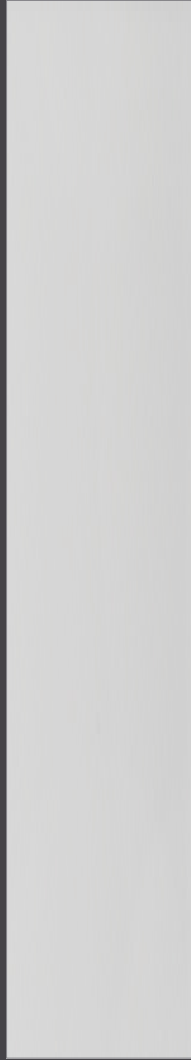
PAINTED SUPER MATT



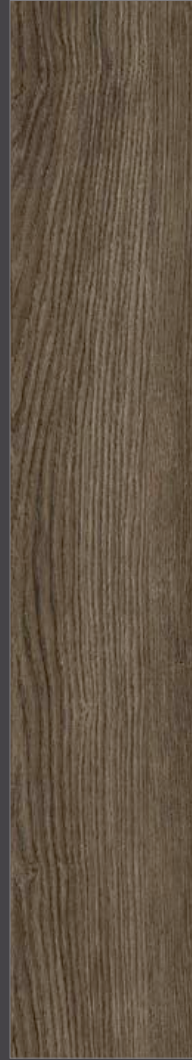
CASHMERE



CARBON GREY



DOVE GREY



KALA ASH



REED GREEN



WHITE

ALL PAINTED SUPER MATT DOORS ARE SUPPLIED WITH MATCHING EDGES AND CANNOT BE SUPPLIED WITH TWO TONE EDGES.

MTM COLOUR OPTIONS

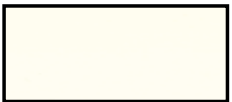
MATT



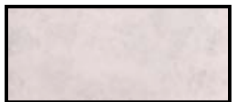
WHITE CLASSIC



PORCELAIN



IVORY



CONCRETE (LIGHT)



DAKAR



CONCRETE (DARK)

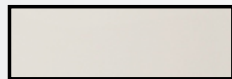
SUPER MATT



WHITE



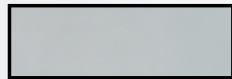
MUSSEL



CASHMERE



DOVE GREY



FJORD



DUSTY PINK



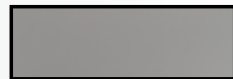
RUSTY RED



REED GREEN



KOMBU GREEN



STONE GREY



DUST GREY



NAVY BLUE



GRAPHITE



BLACK



INDIGO

ASH EMBOSSED



WHITE



IVORY



CASHMERE



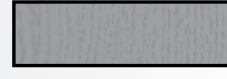
DOVE GREY



DAKAR



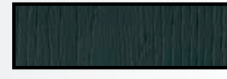
MUSSEL



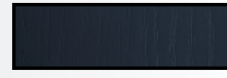
DUST GREY



STONE GREY



FIR GREEN



NAVY BLUE



INDIGO

WOODGRAIN



NATURAL HALIFAX OAK



LISSA OAK



SONOMA OAK



WALNUT

GLOSS



WHITE



DOVE GREY



CREAM



CASHMERE



DUST GREY

ODYSSEY

GLOSS

LASER EDGED DOOR



WHITE



DOVE GREY



CREAM



CHAMPAGNE METALLIC



BLUE METALLIC



ANTHRACITE METALLIC

ODYSSEY LASER EDGED **GLOSS** DOORS ARE AVAILABLE WITH EITHER A MATCHING OR TWO TONE

ODYSSEY

SUPER MATT

LASER EDGED DOOR



WHITE



CASHMERE



DOVE GREY



FJORD



KOMBU GREEN



DUST GREY



GRAPHITE



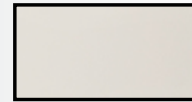
INDIGO

SUPER MATT ARE ONLY AVAILABLE WITH A MATCHING EDGE.

FENTON

PAINTED SUPER MATT

LASER EDGED DOOR



CASHMERE



CARBON GREY



DOVE GREY



KALA ASH



REED GREEN

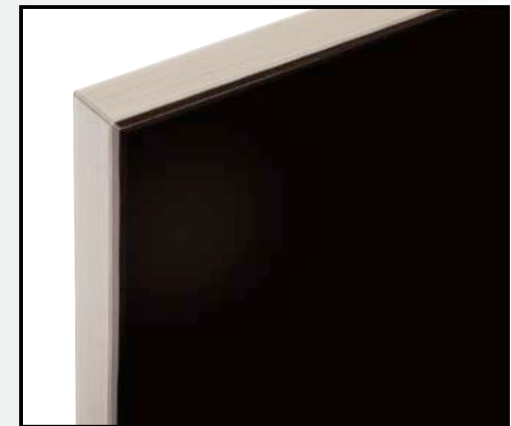


WHITE

ODYSSEY EDGE OPTIONS



MATCHING EDGE



TWO TONE EDGE

HANDLE OPTIONS

No.01



Oval tube 'D' handle, aluminium centre, die-cast legs, 160mm Bar Handle, Brushed Nickel

No.03



156mm 'T' Bar Handle, Brushed Nickel

No.04



Shaker 'D' handle, 96mm Satin Nickel

No.09



Shaker 'D' handle, 96mm Antique English

No.11



30mm Windsor Knob & Plate Chrome

No.12



40mm Windsor Knob Chrome

No.13



160mm Windsor Handle Chrome

No.14



96mm Windsor Handle Chrome

No.15



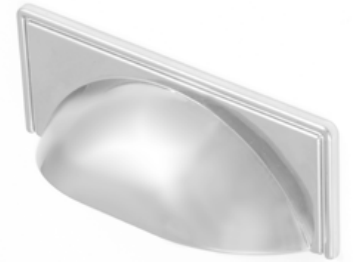
128mm Windsor Latch Handle Chrome

No.16



30mm Westminster Knob Chrome

No.17



64mm Windsor Shell Handle Chrome

No.18



96mm Windsor Shell Handle Chrome

No.21



Reeded drop handle, 160mm Pewter

No.22



Reeded 'T' knob handle, 70mm Pewter

No.23



Archer bow handle, 128mm Shiny Chrome

No.24



Roundel 'D' handle, 128mm Satin Chrome

No.26



Dimple tapered bow handle, 128mm Satin Chrome

No.27



Parallel bowed rod handle, 192mm Brushed Nickel

No.28



Parallel bowed rod handle, 320mm Brushed Nickel

No.29



'T' bar handle, 387mm Brushed Nickel

No.31



Oval tube 'D' handle, aluminium centre with diecast legs, 320mm Brushed Nickel

No.32



Oval tube 'D' handle, aluminium centre with diecast legs, 512mm Brushed Nickel

No.33



Angled boss bar handle, 195mm Brushed Nickel

No.34



Angled boss bar handle, 392mm Brushed Nickel

No.36



Dimpled knob handle, 33mm Brushed Nickel

No.37



Dimpled bow handle, 128mm Brushed Nickel

No.38



Taper strap handle, 96mm Satin Nickel

No.39



Hammered 'D' handle, 128mm Pewter

No.47



Titan 'D' handle & back plate, 64mm Pewter

No.48



Titan Latch handle & back plate, 64mm Pewter

No.49



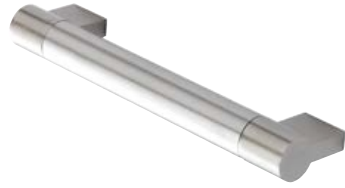
Hammered knob, 32mm Pewter

No.51



Knob handle, 32mm Satin Nickel

No.60



Keyhole bar handle, 128mm Brushed Nickel

No.61



Keyhole bar handle, 156mm Brushed Nickel

No.62



Keyhole bar handle, 256mm Brushed Nickel

No.63



Keyhole bar handle, 306mm Brushed Nickel

No.64



Keyhole bar handle, 356mm Brushed Nickel

No.65



Keyhole bar handle, 456mm Brushed Nickel

No.66



Keyhole bar handle, 632mm Brushed Nickel

No.80



Aries bar handle, 160mm Brushed Nickel

No.81



Aries bar handle, 214mm Brushed Nickel

No.82



Aries bar handle, 310mm Brushed Nickel

No.83



Aries bar handle, 374mm Brushed Nickel

No.84



Aries bar handle, 474mm Brushed Nickel

No.85



Aries bar handle, 502mm Brushed Nickel

No.90



Flat curve rod handle, 96mm Chrome

No.91



Flat curve rod handle, 146mm Chrome

No.92



Flat curve rod handle, 196mm Chrome

No.93



Flat curve rod handle, 246mm Chrome

No.94



Flat curve rod handle, 296mm Chrome

No.99 - HAMPSHIRE



Hampshire 128mm Letter Box Handle

No.100



'T' bar handle, 96mm Hollow Brushed Nickel

No.101



'T' bar handle, 128mm Hollow Brushed Nickel

No.102



'T' bar handle, 160mm Hollow Brushed Nickel

No.103



'T' bar handle, 177mm Hollow Brushed Nickel

No.104



'T' bar handle, 256mm Hollow Brushed Nickel

No.105



'T' bar handle, 357mm Hollow Brushed Nickel

No.110



320mm Euston Strap Handle, Brushed Nickel

No.111



160mm Euston Strap Handle, Brushed Nickel

No.112



320mm Euston Strap Handle, Chrome

No.113



160mm Euston Strap Handle, Chrome

No.114



320mm Euston Strap Handle, Pewter

No.115



160mm Euston Strap Handle, Pewter

No.120 - 126



No.120 - 30mm Windsor Knob & Plate
No.121 - 40mm Windsor Knob
No.122 - 64mm Windsor Shell Handle
No.123 - 96mm Windsor Shell Handle
No.124 - 160mm Windsor Handle
No.125 - 96mm Windsor Handle
No.126 - 128mm Windsor Handle
All finished in Brushed Nickel



No.130
40mm Windsor Knob, Pewter



No.131
64mm Windsor Shell Handle, Pewter



No.132
96mm Windsor Shell Handle, Pewter



No.133
96mm Camden Shell Handle, Brushed Nickel



No.134
320mm Camden Handle, Brushed Nickel



No.135
160mm Camden Handle, Brushed Nickel



No.136
96mm Camden Shell Handle, Chrome



No.137
320mm Camden Handle, Chrome



No.138
160mm Camden Handle, Chrome



No.139
96mm Camden Shell Handle, Pewter

No. 140



320mm Camden Handle, Pewter

No. 141



160mm Camden Handle, Pewter

No. 146



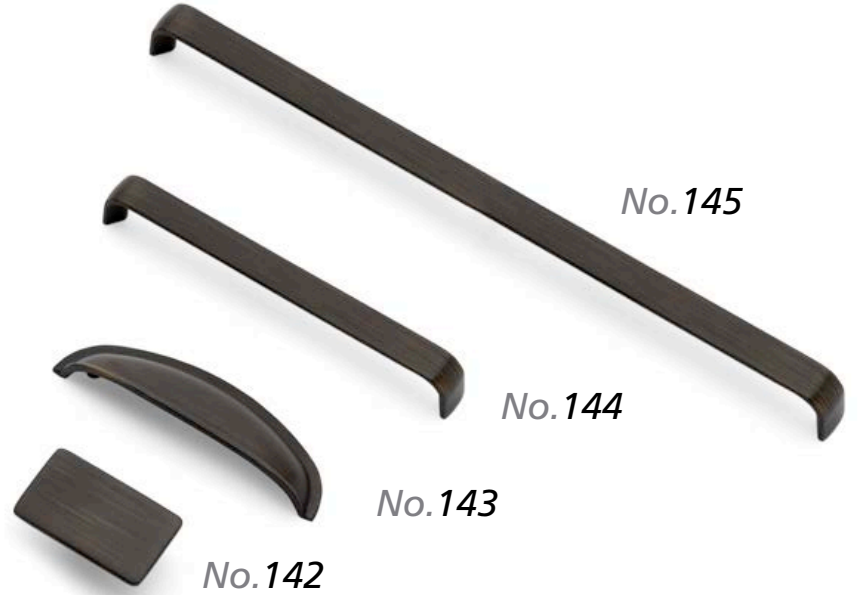
160mm Camden 'D' Handle, Matt Black

No. 147



320mm Camden 'D' Handle, Matt Black

No. 142 - 145



No. 142 - Camden Rectangular Knob
No. 143 - 96mm Camden Shell Handle

No. 144

No. 143

No. 145

No. 144 - 160mm Camden Handle
No. 145 - 320mm Camden Handle
All finished in Antique Black

No. 150



320mm Soho Strap Handle, Brushed Nickel

No. 151



160mm Soho Strap Handle, Brushed Nickel

No. 152



320mm Soho Strap Handle, Chrome

No. 153



160mm Soho Strap Handle, Chrome

No. 154



320mm Soho Strap Handle, Pewter

No. 155



160mm Soho Strap Handle, Pewter

No. 160



35mm Beehive Knob, Brushed Nickel

No. 161



35mm Beehive Knob, Chrome

No.165



40mm Windsor Knob, Antique Copper

No.166



160mm Camden Handle, Antique Copper

No.167



320mm Camden Handle, Antique Copper

No.168



96mm Camden Shell Handle, Antique Copper

No.170



59mm Camden Rectangular Knob, Antique Copper

No.171



59mm Camden Rectangular Knob, Brushed Nickel

No.172



59mm Camden Rectangular Knob, Chrome

No.173



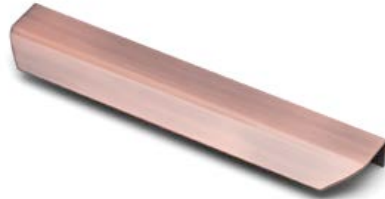
59mm Camden Rectangular Knob, Pewter

No.180



65mm Crofton Trim Handle, Antique Copper

No.181



200mm Crofton Trim Handle, Copper Antique

No.182



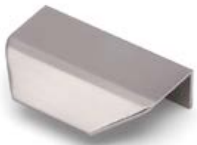
65mm Crofton Trim Handle, Black

No.183



200mm Crofton Trim Handle, Black

No.184



65mm Crofton Trim Handle, Brushed Nickel

No.185



200mm Crofton Trim Handle, Brushed Nickel

No.186



65mm Crofton Trim Handle, Satin Chrome

No.187



200mm Crofton Trim Handle, Satin Chrome

No.190



160mm Lany Knurled Handle, Copper & Chrome

No.191



160mm Lany Knurled Handle, Black & Chrome

No.192



160mm Lany Knurled Handle, Pewter & Chrome

No.200



30mm Fender Knob, Black Smoked

No.201



160mm Fender Handle, Black Smoked

No.202



30mm Fender Knob, Chrome

No.203



160mm Fender Handle, Chrome

No.204



30mm Fender Knob, Satin Brass

No.205



160mm Fender Handle, Satin Brass

No.210



160mm Brixton Handle, Antique Copper

No.211



160mm Brixton Handle, Brushed Satin Nickel

No.212



160mm Brixton Handle, Chrome

No.213



160mm Brixton Handle, Pewter

No.214



160mm Brixton Handle, Satin Brass

No.220



128mm Crackle Handle, Chrome/White

No.221



35mm Crackle Knob, Chrome/White

No.222



Crackle 'T' Knob, Chrome/White

No.230



40mm Camden Oval Knob, Chrome

No.231



40mm Camden Oval Knob, Brushed Nickel

No.232



40mm Camden Oval Knob, Pewter

No.233



40mm Camden Oval Knob, Antique Copper

No.240



160mm Lambeth Handle, Antique Black

No.241



160mm Lambeth Handle, Pewter

No.242



320mm Lambeth Handle, Antique Black

No.243



320mm Lambeth Handle, Pewter

No.250



160mm Brent Handle, Chrome

No.251



160mm Brent Handle, Brushed Nickel

No.252



160mm Brent Handle, Pewter

No.253



320mm Brent Handle, Chrome

No.254



320mm Brent Handle, Brushed Nickel

No.255



320mm Brent Handle, Pewter

No.260



160mm Bexley Handle, Chrome

No.261



160mm Bexley Handle, Brushed Nickel

No.262



160mm Bexley Handle, Pewter

No.263



320mm Bexley Handle, Chrome

No.264



320mm Bexley Handle, Brushed Nickel

No.265



320mm Bexley Handle, Pewter

No.270



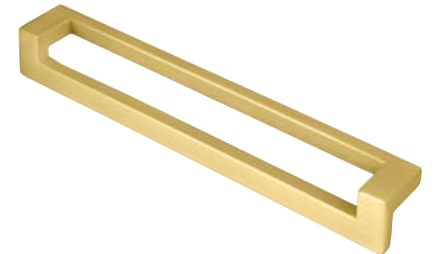
160mm Deco Handle, Matt Black

No.271



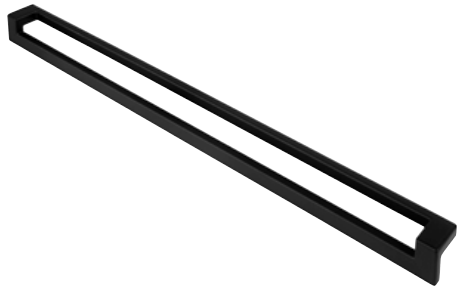
160mm Deco Handle, Pewter

No.272



160mm Deco Handle, Satin Brass

No.275



320mm Deco Handle, Matt Black

No.276



320mm Deco Handle, Pewter

No.278



320mm Deco Handle, Satin Brass

No.280



32mm Windsor Knob, Matt Black

No.281



38mm Windsor Knob, Matt Black

No.282



64mm Windsor Shell, Matt Black

No.283



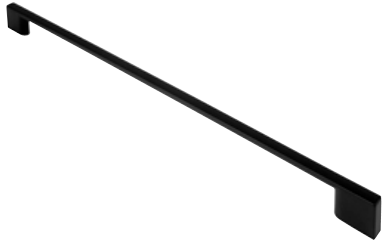
96mm Windsor Shell, Matt Black

No.290



160mm Slim 'D' Handle, Matt Black

No.291



320mm Slim 'D' Handle, Matt Black

No.295



50mm Kensington Pull Handle, Matt Black

No.296



100mm Kensington Pull Handle, Matt Black

No.297



200mm Kensington Pull Handle, Matt Black

No.300



160mm Lisse Strap Handle, Matt Black

No.301



320mm Lisse Strap Handle, Matt Black

No.303



160mm Lisse Strap Handle, Brushed Nickel

No.304



320mm Lisse Strap Handle, Brushed Nickel

No.306



160mm Lisse Strap Handle, Chrome

No.307



320mm Lisse Strap Handle, Chrome

No.309



160mm Lisse Strap Handle, Champagne

No.310



320mm Lisse Strap Handle, Champagne

No.316



Ines Square Knob, Matt Black

No.317



160mm Ines D Handle, Matt Black

No.318



320mm Ines D Handle, Matt Black

No.319



Ines Square Knob, Brushed Nickel

No.320



160mm Ines D Handle, Brushed Nickel

No.321



320mm Ines D Handle, Brushed Nickel

No.322



Ines Square Knob, Chrome

No.323



160mm Ines D Handle, Chrome

No.324



320mm Ines D Handle, Chrome

No.325



Ines Square Knob, Champagne

No.326



160mm Ines D Handle, Champagne

No.327



320mm Ines D Handle, Champagne

No.330



160mm Renne D Handle, Matt Black

No.331



320mm Renne D Handle, Matt Black

No.332



160mm Renne D Handle, Brushed Nickel

No.333



320mm Renne D Handle, Brushed Nickel

No.334



160mm Renne D Handle, Chrome

No.335



320mm Renne D Handle, Chrome

No.336



160mm Renne D Handle, Champagne

No.337



320mm Renne D Handle, Champagne

No.340



160mm Anais D Handle, Matt Black

No.341



320mm Anais D Handle, Matt Black

No.342



160mm Anais D Handle, Brushed Nickel

No.343



320mm Anais D Handle, Brushed Nickel

No.344



160mm Anais D Handle, Chrome

No.345



320mm Anais D Handle, Chrome

No.346



160mm Anais D Handle, Champagne

No.347



320mm Anais D Handle, Champagne

No.350



30mm Linea Solid Post Knob, Matt Black

No.351



30mm Linea Solid Knob, Matt Black

No.352



160mm Linea Solid Handle, Matt Black

No.352a



224mm Linea Solid Handle, Matt Black

No.353



30mm Linea Solid Post Knob, Chrome

No.354



30mm Linea Solid Knob, Chrome

No.355



160mm Linea Solid Handle, Chrome

No.355a



224mm Linea Solid Handle, Chrome

No.356



30mm Linea Solid Post Knob, Satin Brass

No.357



30mm Linea Solid Knob, Satin Brass

No.358



160mm Linea Solid Handle, Satin Brass

No.358a



224mm Linea Solid Handle, Satin Brass

No.360



160mm Block Bar Handle, Antique Copper

No.361



320mm Block Bar Handle, Antique Copper

No.362



160mm Block Bar Handle, Matt Black

No.363



320mm Block Bar Handle, Matt Black

No.364



160mm Block Bar Handle, Brushed Nickel

No.365



320mm Block Bar Handle, Brushed Nickel

No.366



160mm Block Bar Handle, Chrome

No.367



320mm Block Bar Handle, Chrome

No.368



160mm Block Bar Handle, Pewter

No.369



320mm Block Bar Handle, Pewter

No.370



160mm Block Bar Handle, Satin Brass

No.371



160mm Block Bar Handle, Satin Brass

EMUCA FITTINGS



LATERAL SUPPORT - WARDROBE RAIL



CENTRAL SUPPORT - WARDROBE RAIL



HANGING SUPPORT - WARDROBE RAIL



WARDROBE RAIL 2M & 4M



LATERAL SUPPORT - WARDROBE RAIL



CENTRAL 'T' SUPPORT - WARDROBE RAIL



CHROME WARDROBE RAIL 3M



LATERAL PULL OUT TIE/SCARF RACK



PULL OUT WARDROBE RAIL



PULL OUT TROUSER RACK



LATERAL PULL OUT SHOE RACK



PULL DOWN WARDROBE RAIL

450-600MM
600-830MM
830-1150MM



